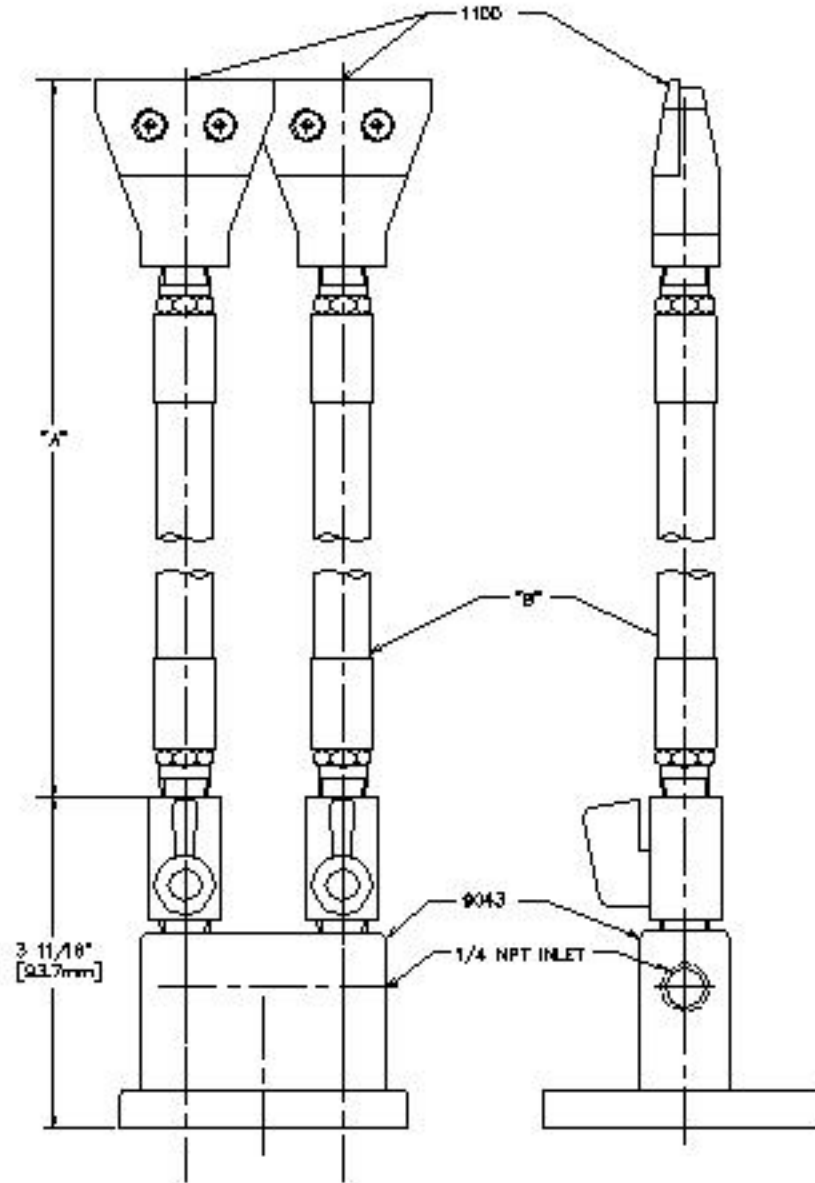


PART	"A"	"B"
1122-8406	8 3/16" [208mm]	8206
1122-8412	14 3/16" [380.4mm]	8212
1122-9418	20 3/16" [512.8mm]	9218
1122-8424	26 3/16" [665.2mm]	8224
1122-8430	32 3/16" [817.6mm]	8230
1122-9438	38 3/16" [970mm]	9238



COPYRIGHT 2003 - EXAIR CORPORATION

EXAIR CORPORATION		
TITLE 2 IN SUPER AIR NOZZLE, STAYSET HOSE, WAG BASE		
DATE 11/24/03	DRAWING NUMBER DEM-1122-9406 TO 1122-9436	SCALE 1:1