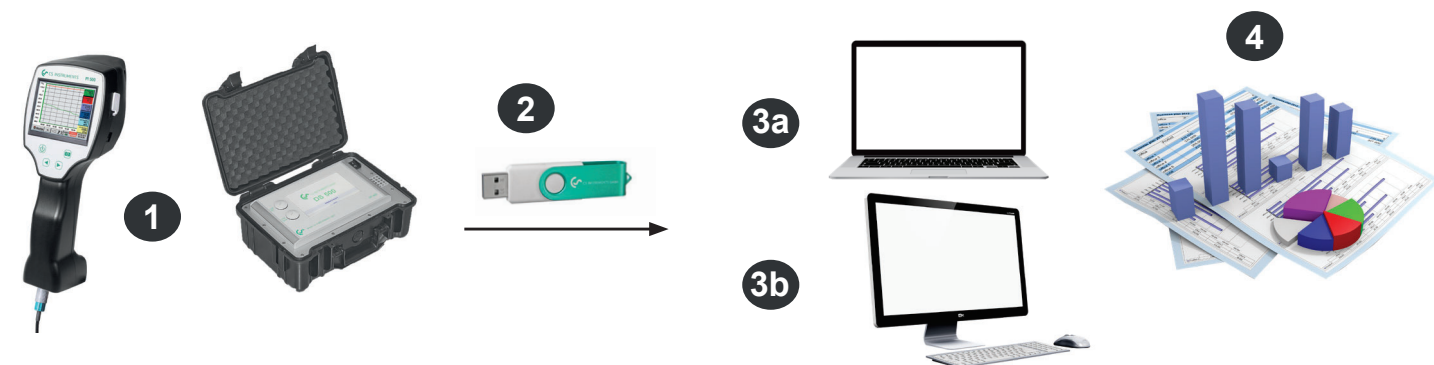


## CS Basic

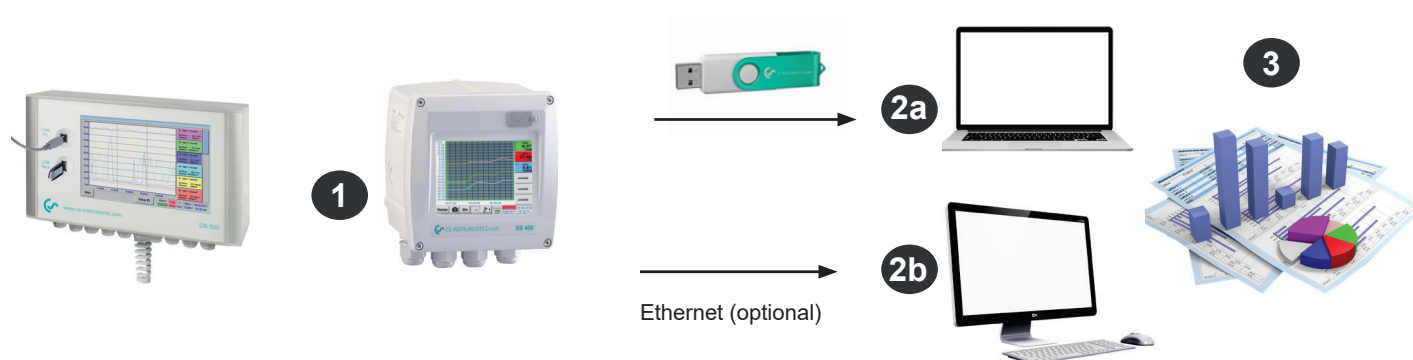
### Data evaluation during mobile measurement:

With the CS Basic, the chart recorder DS 500/400 and all mobile devices with data logger can be read out. Depending on the device, data transfer is performed either via USB stick or Ethernet connection.



- 1** Mobile measurement at the customer. Measured data are saved in the data logger in the selected measuring cycle
- 2** Export of the data to USB stick
- 3a** Import of the measured data to the laptop directly on-site
- 3b** Import of the measured data to the computer in the office
- 4** Evaluation and print out of the measured data

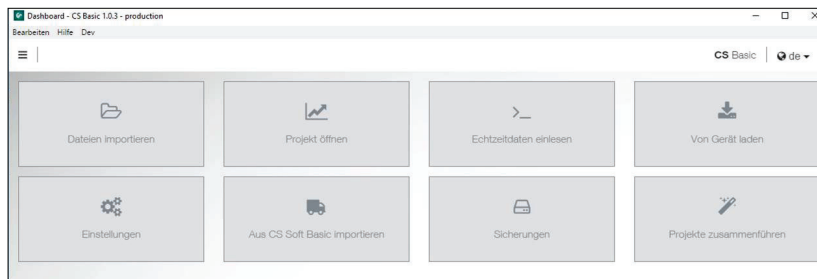
### Data evaluation for firmly installed chart recorders in the company:



- 1** Chart recorder is firmly installed in the company. Measured data are saved in the data logger in the set measuring cycle.
- 2a** Transfer of the data via USB stick to the computer
- 2b** Readout of the logger data via the computer network (LAN) by means of CS Basic
- 3** Evaluation and print out of the measured data

DESCRIPTION	ORDER NO.
CS Basic – data evaluation graphically and in tabular form - reading of the measured data via USB or Ethernet, license for 2 workstations	0554 8040
Additional license for 1 further workplace	Z554 8040
Upgrade CS Soft Basic (0554 7040) to CS Basic (0554 8040). CAA module is no longer available. Please state old licence key when ordering	Z554 8041

# CS Basic



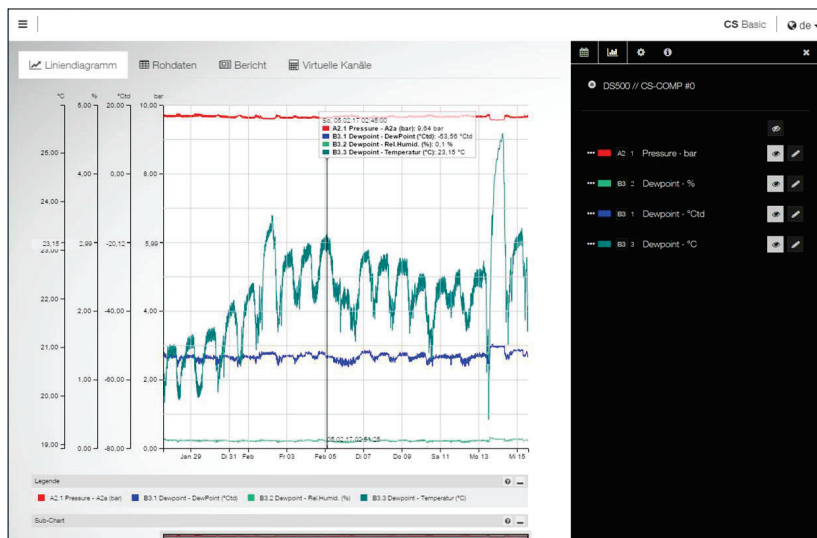
## Intuitive operation

- All important functions can be retrieved via the dashboard.
- Global settings: Adjust units and change decimal places, store company name and logo
- Import real-time data: Establish Ethernet connection to CS logger or sensor. Trace real-time measured values in graphic and in table form
- Import from CS Soft Basic: Data migration from the previous version of CS Soft Basic
- Data backup: Backup of the projects and the database
- csv. export

## Graphic evaluation

All measurement curves are indicated in colour. All necessary functions like free zoom, selection/deselection of single measurement curves, free selection of periods, scaling of the axes, selection of colours and so on are integrated:

This view can be saved as a PDF file and sent as an e-mail. Different data can be combined in a shared file.



Datum	Gerät	A2.1	B3.1	B3.2	B3.3
		Pressure A2a bar	Dewpoint DewPoint °Ctd	Rel.Humid. %	Temperatur °C
27.01.17 13:52:18	0	9,6749	-50,6462	0,1534	20,2556
27.01.17 13:52:28	0	9,676	-51,4187	0,1394	20,2517
27.01.17 13:52:38	0	9,6769	-52,0952	0,128	20,2499
27.01.17 13:52:48	0	9,678	-52,791	0,1173	20,2479

## Table view

All measuring points are listed with exact time interval. The desired measuring channels with the name of the measuring place can be selected via the diagram explorer.

Kanal	Durchschnitt	Minimum	Datum von Minimum	Maximum	Datum von Maximum
B3.2 Dewpoint - Rel.Humid. (%)	0.1094 %	0.0549 %	15.02.17 13:50:38	0.4118 %	13.02.17 14:30:08
B3.1 Dewpoint - DewPoint (°Ctd)	-53.2789 °Ctd	-57.9552 °Ctd	27.01.17 13:54:38	-41.8251 °Ctd	13.02.17 14:38:08
B3.3 Dewpoint - Temperatur (°C)	22.072 °C	20.1182 °C	27.01.17 13:59:58	28.0402 °C	14.02.17 08:25:38

## Statistics

All required statistic data are visible at a glance. So the user can see very quickly which minimal or maximal measured values occurred when and for how long.

A1.2 Verbrauch Halle 1 - A1b (m³)	Von (m³)	Januar	Februar	März	April	Mai	Juni	Juli	August	September	Oktober	November	Dezember	Summe
		1.958.827	2.078.325	2.215.062	2.368.484	2.514.612	2.666.480	2.826.483	3.002.938	3.169.484	3.318.642	3.491.661	3.659.617	
Bis (m³)		2.078.325	2.215.062	2.368.484	2.514.612	2.666.480	2.826.483	3.002.938	3.169.484	3.318.642	3.491.661	3.659.617	3.775.973	
Verbrauch (m³)		117.498	138.737	153.402	146.148	151.868	160.003	176.455	166.546	149.158	173.019	167.956	116.356	1.817.146
Kosten (€)		2.232,46	2.636,00	2.914,64	2.776,81	2.885,49	3.040,06	3.352,65	3.164,37	2.834,00	3.287,36	3.191,18	2.210,76	34.525,774
A1.1 Verbrauch Halle 1 - A1a (m³/h)	Minimum (m³/h)	0	6,3	0	0	0	1,36	0	0	0	0	0	0	
	Durchschnitt (m³/h)	157,6	205,98	205,8	202,64	203,52	221,66	236,5	223,25	206,67	232,19	232,67	155,99	
	Maximum (m³/h)	1.060,36	527,02	736,39	1.154	662,43	618,27	617,9	636,36	931,66	642,96	689,77	2.410,71	

## Flow evaluation

The software carries out flow analysis for all connected flow meters, optionally as a daily, weekly or monthly analysis.