



Solid, simple and smart: advanced reliability in compressed air

DRB 20-34, DRA 10-19 IVR PM/DRB 20-30 IVR PM



DRA 10-19 IVR PM/ DRB 20-30 IVR PM

How do you take a proven compressor range and make it even better? By engineering superior efficiency and reliability.

The new **DRA 10-19 IVR PM / DRB 20-30 IVR PM** series, equipped with advanced iPM (Interior Permanent Magnet) technology, delivers double-digit energy savings and a significantly reduced environmental footprint. Built for demanding industrial environments, these compressors combine rugged durability with cutting-edge performance.

The iPM drive system is not only more energy-efficient than previous designs—it's engineered for maximum reliability under continuous load, ensuring consistent output and lower operating costs over time.

Compact and quiet, all three models integrate seamlessly into your compressor room or at the point of use, functioning as a primary unit or a complementary solution. Whatever your application, our most versatile rotary screw compressor is designed to meet tough requirements with uncompromising efficiency and dependability.



Performance

- Achieve **up to 45% energy savings** with the DRA 10-19 IVR PM / DRB 20-30 IVR PM motor compared to fixed-speed designs.
- Benefit from **up to 17% higher efficiency** with our next-generation **iPM technology**, outperforming traditional Induction Motor VSD systems.
- Built for **continuous, reliable operation**, even in harsh environments with ambient temperatures up to **46°C**.
- The **IP54-rated drive train** ensures protection and consistent performance in dusty and humid conditions.
- **Direct-drive VSD combined with iPM technology** delivers uncompromising reliability and efficiency.
- Operates at **sound levels as low as 62 dB(A)** for quieter industrial environments.
- Equipped with the **advanced ES4000T touchscreen controller** for optimal performance monitoring and energy management.

Flexibility

- Power range from **7 to 22 kW** with pressure options between **4 and 13 bar**.
- Available in **iPM Variable Speed Drive** or **fixed-speed configurations** to match your application needs.
- Choose from **floor-mounted or tank-mounted models**, with or without integrated dryer.
- Multiple tank sizes for tailored system design.
- Install in your **compressor room or at the point of use** for maximum convenience.
- Extensive customization options to meet **specific operational requirements**.

A versatile range



DRB 20-34 fixed-speed

- **Gear-driven technology** delivers superior performance compared to belt drive, thanks to our in-house air end design and precision gearbox engineering.
- Built for **long duty cycles and continuous operation** in demanding industrial environments.
- Equipped with **IP55, Class F IE3 motor**, ensuring durability and reliability under tough conditions.
- **Robust, low-noise design** for heavy-duty applications.
- Upgrade from belt drive to gear drive offers a **payback within 2 years**, reducing maintenance and improving efficiency.



+ TCO* savings

Performance

Serviceability

Lifetime

**DRA 10-19 IVR PM /
DRB 20-30 IVR PM**

- Achieve **up to 17% additional energy savings** compared to traditional VSD technology.
- Ideal for **high-efficiency operation during fluctuating air demand**, ensuring maximum performance at all times.
- Total energy savings of **up to 45% compared to fixed-speed compressors**.
- Features **IP54, Class H IE4 oil-cooled motor** for superior thermal management and reliability.
- **New air end and motor connection design** simplifies drive train maintenance and reduces downtime.
- Upgrade from fixed-speed to iPM delivers **payback in approximately 1 year**, making it the most cost-effective solution for energy-conscious operations.

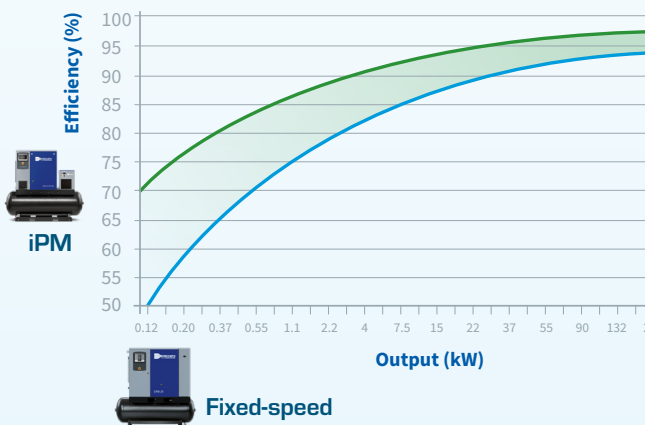
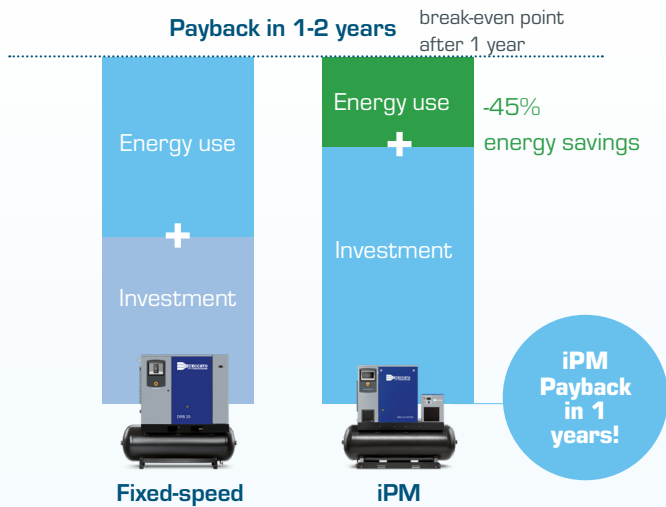


iPM for major energy savings

Energy accounts for **over 70% of the total cost** of owning and operating a compressor. That's why Ceccato developed **iPM technology**—to deliver **substantial energy savings** and lower your operating costs.

Unlike traditional compressors that run at a single speed, **iPM compressors automatically adjust motor speed to match fluctuating air demand**, common in most production environments. This intelligent control results in **energy savings of up to 45%** with the **DRA 10-19 IVR PM / DRB 20-30 IVR PM** models.

The return on investment is clear: **payback in just 1 year** compared to a fixed-speed unit. For industrial operations, that's not just an upgrade—it's a strategic decision.



The bigger benefit of a small iPM compressor

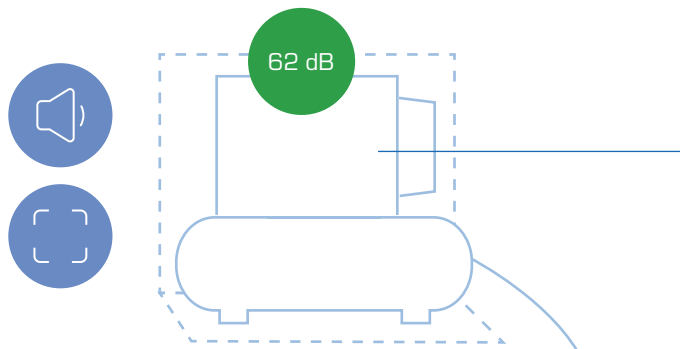
Does energy efficiency matter less in smaller compressors? **Absolutely not.** In fact, **iPM technology delivers its greatest savings in smaller units**, making them the most cost-effective choice. That's why you can achieve **ROI in as little as 1 year**, even on compact models.

State-of-the-art engineering

At the core of our lineup is **best-in-class compression technology**, engineered for **maximum performance and durability**.

- **IE4 efficiency rating** with **Class H motor windings** for superior reliability.
- **Maintenance-free interior permanent magnet motor**, optimized for high efficiency even in extreme conditions.
- **Direct drive system** with high turn-down ratio for unmatched energy control.
- **Oil cooling and Class H windings** ensure thermal stability and long service life.
- **New coupling design** simplifies maintenance and minimizes downtime.



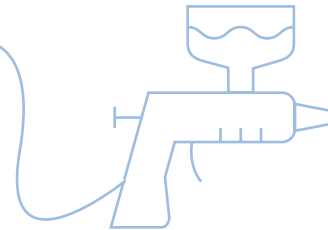


The compact all-in-one compressed air system...

Ceccato compressors are built to save space. And if you choose a tank-mounted model, you get an all-in-one compressed air system with the smallest footprint. For maximum air quality, a refrigerant dryer can be fully integrated.

...That can be installed at the point of use

Thanks to their quiet operation and integrated design, our small rotary screw units can be installed on your production floor. That means you don't need a separate compressor room and can save on floor space, piping, and installation costs. You can reduce your investment and operational costs as well, as you can operate the machine at a lower pressure setting and eliminate pressure drops throughout your piping network.



Save on investment costs

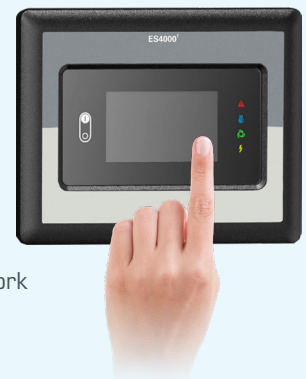
- ✓ Minimal pressure drops
- ✓ Higher FAD

Save on operational costs

Advanced monitoring, control & connectivity

The state-of-the-art ES4000T touchscreen controller – included as standard – gives you on-screen and remote insight into the performance of your compressor:

- Large 4.3" full-color touchscreen display
- 30+ languages
- Warning indications and shutdown alarms
- Service status and schedule indication
- Visualisation of running conditions over LAN network
- Compressor data analysis over ICONS



ICONS

Increased uptime, powered by ICONS

With the Intelligent CONnectivity System (ICONS), you get data and insights from your machines delivered to your computer, tablet or smartphone.

- Increase the reliability of your machine by identifying problems before they become a threat to the continuity of your production.
- Analyze and optimize your energy consumption and CO₂ emissions.
- Receive high-quality energy reports ensuring the ISO50001 compliance of your site.



Premium compression technology

Oil-cooled IE4 efficiency and Class H interior Permanent Magnet (iPM) motor:

Maintenance free; includes innovative oil-cooling technology for optimal performance in up to 46°C.

IP54 electrical cubicle:

Can withstand up to 60°C with the highest standards in EMC performance.



In-house designed compression element:

Gives you best-in-class Free Air Delivery and Specific Energy Requirement.

Drive train:

IE4 oil-cooled motor for optimal cooling performance. All-new conical coupling design for fast maintenance on the drive train.

Oversized coolers and oil vessel:

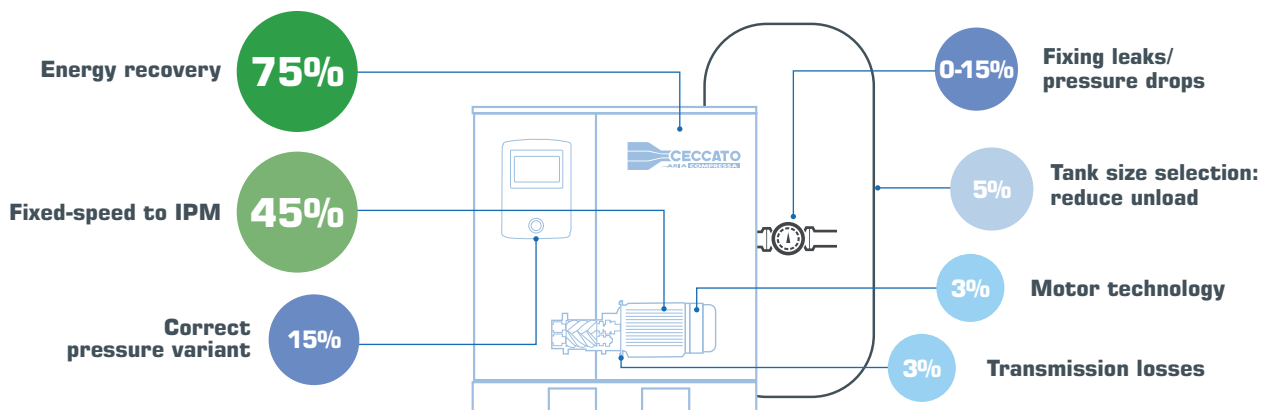
For improved performance.

A range of options

- Energy recovery
- Water separation drain
- Canopy heater
- Electronic water drain
- 8000H Oil
- Heavy duty air inlet filter
- Line filter G
- Silencing baffle
- Food grade oil
- Opt.econtrol 6I

Maximize your energy savings

Energy is by far the biggest cost of owning and operating a compressor. Luckily, there are many options to minimize the energy consumption of your air system. Technologies such as energy recovery can have a huge impact on your bottom line and your environmental footprint, with energy savings of up to 75%. A holistic view of your compressed air system is key. It starts with the selection of efficient technologies when buying your compressor. But it doesn't end there. Monitoring and analyzing your air system as you use it will often reveal optimization opportunities. Your Ceccato representative can help you find those savings.



Technical specifications

DRB 20-34

Model	Max. working pressure	Reference working pressure	Free Air Delivery @ reference conditions*			Motor power		Noise level**	Cooling air flow	Weight		
										Base Mounted	Base Mounted Dryer	Tank Mounted Dryer 500 L
	bar	bar	m³/h	l/s	cfm	kW	hp	db(A)	m³/h	kg		
DRB 20	7.5	7	162	44.9	95	15	20	67	2484	330	375	550
	8.5	8	152	42.3	90							
	10	9.5	136	37.8	80							
	13	12.5	117	32.4	69							
DRB 25	7.5	7	199	55.3	117	18.5	25	68	3492	355	405	580
	8.5	8	189	52.4	111							
	10	9.5	175	48.7	103							
	13	12.5	137	38	80							
DRB 29	7.5	7	231	64.3	136	22	30	69	3492	370	420	595
	8.5	8	224	62.4	132							
	10	9.5	198	54.9	116							
	13	12.5	167	46.5	99							
DRB 34	7.5	7	253	70.2	149	26	35	71	6516	385	435	610
	8.5	8	239	66.4	141							
	10	9.5	224	62.1	132							
	13	12.5	196	54.4	115							

DRA 10-19 IVR PM / DRB 20-30 IVR PM

Model	Min. working pressure	Reference working pressure	Motor power		Min. FAD*		Free Air Delivery @ reference conditions*						Noise level**	Cooling air flow	Weight (kg)					
							Max. FAD*								Base Mounted	Base Mounted Dryer	Tank Mounted Dryer			
							7 bar		7 bar		9.5 bar						12.5 bar		270 L	500 L
							m³/h	l/s	m³/h	l/s	m³/h	l/s					m³/h	l/s		
bar	bar	kW	hp	m³/h	l/s	m³/h	l/s	m³/h	l/s	m³/h	l/s	db(A)	m³/s							
DRA 10 IVR PM	4	10	7.5	10	16.6	4.6	77.8	21.6	67.7	18.8	56.5	15.7	62	0.61	210	-	365	395		
DRA 15 IVR PM	4	10	11	15	22.7	6.3	115.9	32.2	95.8	26.6	74.9	20.8	63	0.61	212	-	367	397		
DRA 19 IVR PM	4	10	15	20	20.5	5.7	139.7	38.8	119.5	33.2	92.2	25.6	65	0.61	223	-	393	425		
DRB 20 IVR PM	4	10	15	20	43.2	12	182.2	50.6	156.6	43.5	132.8	36.9	64	0.69	325	380	-	555		
DRB 25 IVR PM	4	10	18.5	25	42.1	11.7	214.6	59.6	185.0	51.4	146.2	40.6	68	0.97	340	400	-	575		
DRB 30 IVR PM	4	10	22	30	41.4	11.5	246.6	68.5	208.8	58	188.6	52.4	69	0.97	345	410	-	585		

Dimensions

	DRB 20-34			DRA 10-19 IVR PM			DRB 20-30 IVR PM		
	Dimensions (mm)			Dimensions (mm)			Dimensions (mm)		
	Length	Width	Height	Length	Width	Height	Length	Width	Height
Base Mounted	1200	835	1220	1000	655	1062	1200	835	1220
Base Mounted Dryer	1450	835	1220	-	-	-	1450	835	1220
Tank Mounted Dryer 270 L	-	-	-	1540	655	1550	-	-	-
Tank Mounted Dryer 500 L	1940	835	1835	1875	655	1680	1940	835	1835

* Unit performance measured according to ISO 1217, Annex C, latest edition

** Noise level measured according to ISO 2151:2004 using ISO 9614/2

Ceccato's heritage

Ceccato Aria Compressa is a product company that specializes in the design, production and sales of screw compressors and air treatment products like dryers and filters, within the Atlas Copco Group.

Atlas Copco is a world-leading business in more than 180 countries, a truly global company, that serves customers with its innovative compressors, vacuum solutions and air treatment systems, construction and mining equipment, power tools and assembly systems, with more than 44,000 committed employees in the Group who contribute to the success of the company.

Since 1936 the Ceccato name has represented a very simple and reliable product range, designed for an extensive variety of applications.

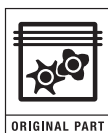
The stationary electric driven compressors produced by Ceccato have been largely distributed worldwide without any restrictions of ambient conditions or locations. The range of compressors is integrated with a wide selection of dryers and accessories

in general, to make the Ceccato range of products an interesting business opportunity for any distributor worldwide. The attitude of Ceccato is to design and produce compressors according to the real market needs, in order to become a real reliable partner for any company who wants to establish solid and long-term relationships.



Contact your local representative:

www.ceccato.com



CARE

Care is what service is all about: professional service by knowledgeable people, using high-quality original parts.

TRUST

Trust is earned by delivering on our promises of reliable, uninterrupted performance and long equipment lifetime.

EFFICIENCY

Equipment efficiency is ensured by regular maintenance. Efficiency of the service organization is how Original Parts and Service make the difference.